

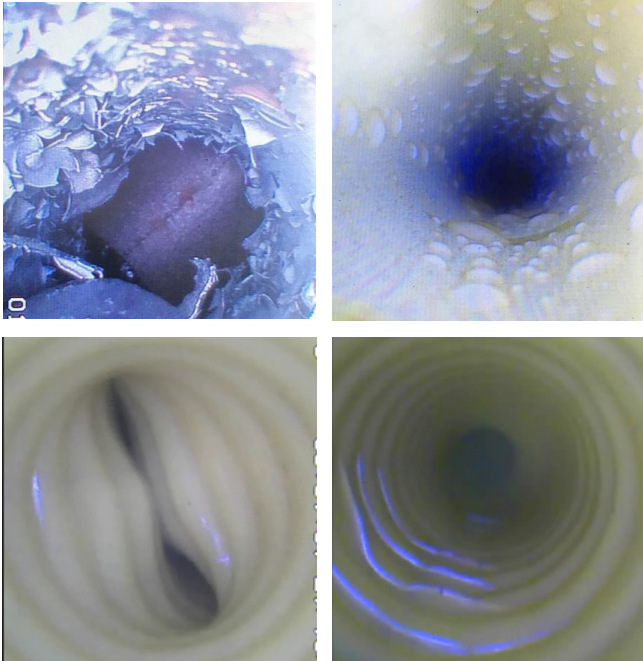


SERVICECAM LTE

A live gas CCTV system for surveying PE, ServiFlex® Services

- Fast diagnosis of poor pressure problems due to obstructions, water ingress or incorrect installation of services.
- Can be used to survey 17.5mm - 32mm PE and ServiFlex® and metallic ¾" to 2" services (up to the first bend).
- Entry system through ECV allows for 'live' inspection of up to 20m of pipe.
- For use on low pressure (75mbarg).

Issues found by ServiceCAM:

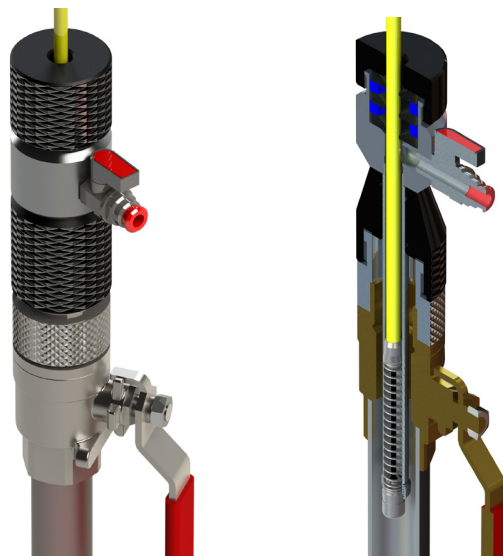


- High quality 9.5mm camera, featuring the latest LED lighting technology for improved vision.
- The camera is spring mounted to allow it to pass around up to 2 short radius bends in a PE service and up to the first bend in metallic.
- Comes with a compact Synthotech Display Unit (SDU), giving up to 5 hours battery life. It is supplied with with two chargers - mains or 12v in-car, so that it can be charged at the depot or on the go.



- Obtain instant in-pipe information
- No interruption to customer supplies
- Improve customer satisfaction
- Reduction in environmental impact

ServiceCAM's unique glanding system enables users to survey inside live gas service pipes, using the ECV as an entry point.



For more information please click here - <https://youtu.be/xFWKEWdz44A>

CONTACT OUR TEAM TODAY TO DISCUSS YOUR REQUIREMENTS
01423 816060 > info@synthotech.co.uk > www.synthotech.com

©2020 Synthotech Ltd. All rights reserved to make changes to design and specification without prior notice or consent. E&OE

INFO@SYNTHOTECH.CO.UK

+44 (0) 1423 816 060

INNOVATIVE ENGINEERING

WWW.SYNTHOTECH.COM



SYNTHOTECH