



SERVIBAG BYPASS

A live gas system for adding a bypass tee to an external meter location

ServiBAG Bypass is a process for adding a bypass tee to an external meter location without interruption to the customer supply. This is achieved with a consumable enclosure that is fitted around the meter pipework.

The enclosure is sealed to the pipework, allowing for the continued supply of gas whilst service pipework is reconfigured. Supply pressure is monitored throughout the process to ensure that there is no interruption during the operation.

Equipment is supplied in kit format, allowing many parts to be reused, the parts that are consumable are inexpensive, reducing operational costs.

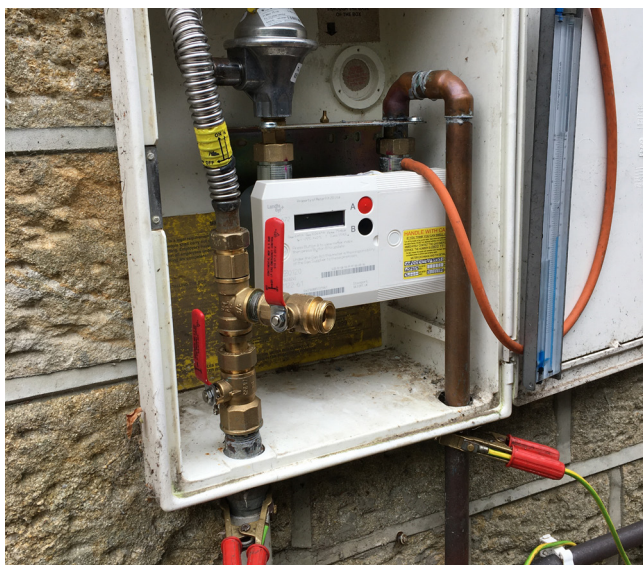


Example of kit parts



- High quality encaspsualtion bag holds gas up to 75mbar pressure.
- Easy to assemble kit with high percentage of reusable parts and inexpensive consumable parts.
- The kit comes with fittings compatible with a range of PE and metallic service pipes/connections as well as a range of external meter installation layouts.

- **SAFER** - Allows for compliance of COVID-19 social distancing measures.
- **CHEAPER** - No need to disconnect customers from their gas supply, therefore no need for purge and relight teams. Comes in kit form with inexpensive consumable parts.
- **FASTER** - Speeds up a bypass.



CONTACT OUR TEAM TODAY TO DISCUSS YOUR REQUIREMENTS
01423 816060 > info@synthotech.co.uk > www.synthotech.com

©2020 Synthotech Ltd. All rights reserved to make changes to design and specification without prior notice or consent. E&OE

INFO@SYNTHOTECH.CO.UK

+44 (0) 1423 816 060

INNOVATIVE ENGINEERING

WWW.SYNTHOTECH.COM



SYNTHOTECH