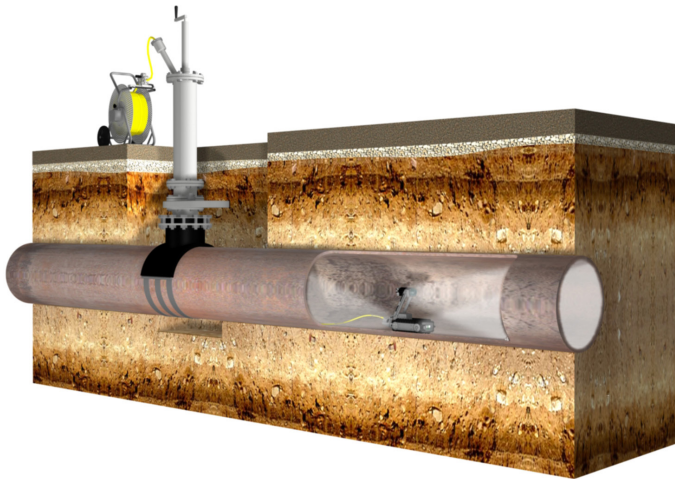
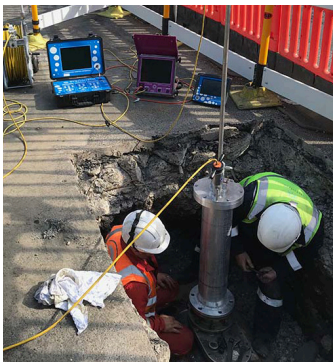


Intelligent robotics system for the inspection of large diameter PE and Metallic live gas mains

- Survey up to 400 meters from a single excavation.
- For use on 12" to 48" Metallic Mains and 355mm to 630mm PE Pipes up to 2 barg.
- 'Live' metallic vertical launch through a 6" BSP drilled hole or a 'live' PE vertical launch through 250mm branch saddle.



- Investigate and locate bends, syphons, internal mechanical seals and service connections.
- Excavation of only 1.2m x 1.2m required reducing reinstatement works.
- No interruption to consumer supply.



- Compatible with: ALH System 3 valve, all AVK/Donkin (or similar) large diameter valves, full encirclement clamps for vertical insertion into mains less than 24" diameter and ALH Systems' Bond and Bolt system for keyhole access.
- SynthoCAM™ TITAN pan and tilt technology provides full circumferential vision.
- Skid Steering allows full remote manoeuvrability, even turning in its own footprint.
- Specialist Services carried out by Synthotech Technical Support Engineers with recording ability with full written reports available following survey.



CONTACT OUR TEAM TODAY TO DISCUSS YOUR REQUIREMENTS
01423 816060 > info@synthotech.co.uk > www.synthotech.com

©2020 Synthotech Ltd. All rights reserved to make changes to design and specification without prior notice or consent. E&OE