

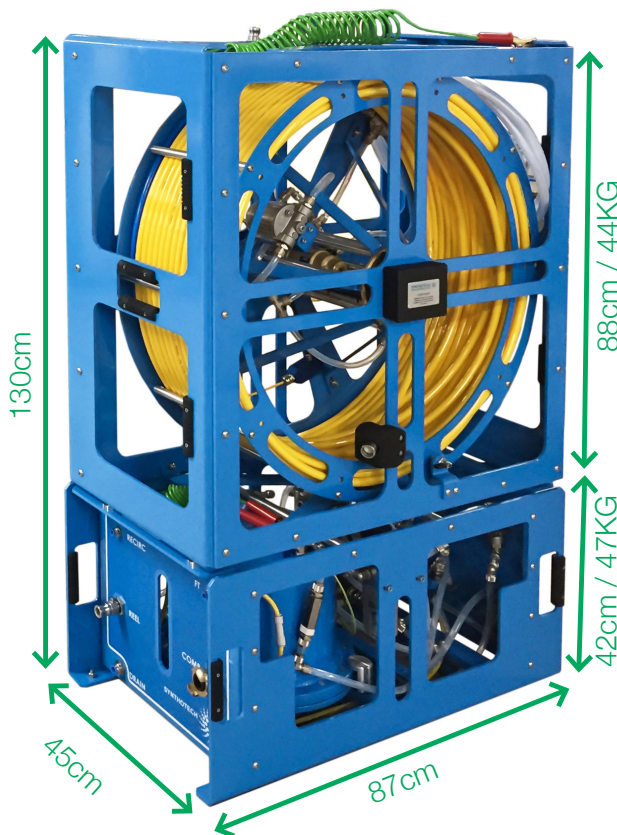


WEXTECH M-V1

Water Extraction Technology
Mains - Van edition

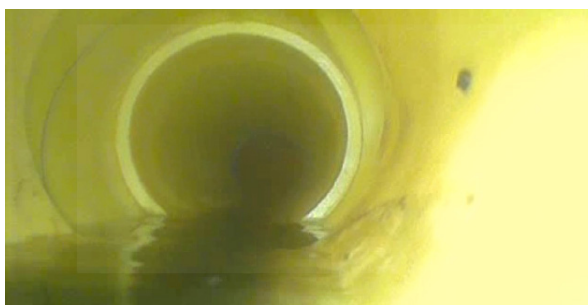
Locate and remove water from live gas mains whilst recycling the gas back into the main

- Accurately locates the source of water ingress so that a permanent repair can take place avoiding repeat visits.
- Reduces the amount of excavations needed to find an issue compared to traditional methods.
- Unique closed-loop system recycles the gas back into the main, reducing emissions into the atmosphere.
- Compatible with Synthotech's world leading Synthocam 3 live gas CCTV system that is used and approved by all UK gas networks; keeping investment cost to a minimum.
- Includes an option to connect bowser system for handling larger volumes of water.



- Designed to be a 2 man lift.
- Fits between racking on a standard van.
- Reduce excavation and repeat visits.
- Improve customer satisfaction.

- Suitable for use on 'live gas' metallic mains 4" to 10" diameter, and PE mains 90mm to 250mm diameter.
- Can survey up to 100m from a single excavation - 50m in each direction.
- For use on low pressure up to 75mbarg.



Cameras:



CONTACT OUR TEAM TODAY TO DISCUSS YOUR REQUIREMENTS
01423 816060 > info@synthotech.co.uk > www.synthotech.com

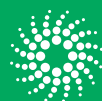
©2020 Synthotech Ltd. All rights reserved to make changes to design and specification without prior notice or consent. E&OE

INFO@SYNTHOTECH.CO.UK

+44 (0) 1423 816 060

INNOVATIVE ENGINEERING

WWW.SYNTHOTECH.COM



SYNTHOTECH