

Case Study - ServiceCam

ServiceCam helps remove PLUG on Poor Pressure and saves National Grid over £1000

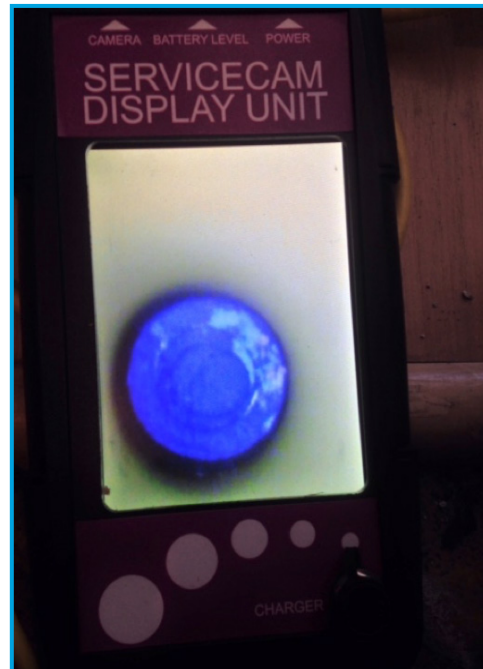
THE FACTS

- National Grid Gas distribution received a report of a customer who had poor pressure.
- A Network Supervisor on NGG's Emergency team visited the site and used ServiceCam to locate the source of the problem.
- As per the picture below the poor pressure was caused by a quarter inch plug that had somehow lodged itself into the PE service pipe, towards the ECV end.



THE SYSTEM

- Live Gas CCTV Survey Systems for pre-enabling, investigation of poor pressure, water ingress or installation issues.
- 1"metallic/17.5mm-32mm PE and Serviflex Services.
- Entry via 3/4"-1" ECV- no need for drilling.
- Up to 20m push distance with a 6mm cobra.
- For pressures up to 75mbar.
- 9.5mm LED camera for long lasting bright vision.
- Handheld display unit that last for up to 5 hours use, rechargeable from mains or 12v in-car.



THE BENEFITS

- Using Servicecam the team were able to find the plug easily **saving time and over £1000**.
- The ECV and blockage was in the centre of the property so would have been a very difficult resite.
- fixed quickly to reduce inconvenience to the customer and no need for reinstatement cost.
- Simple to use and simple to train.
- One man operation.



+44 (0) 1423 816 060

INNOVATIVE ENGINEERING

WWW.SYNTHOTECH.COM



SYNTHOTECH
SYNTHOTECH

CONTACT ONE OF OUR TEAM TODAY TO DISCUSS THIS PRODUCT

01423 816060 | info@synthotech.co.uk | www.synthotech.co.uk

©2016 Synthotech Ltd. All rights reserved to make changes to design and specification without prior notice or consent. E&OE