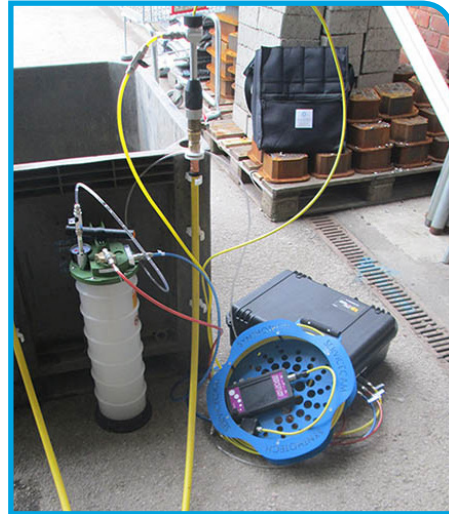


# Case Study - Water Extraction Technology for Services -WExTech

Water Extraction for Services proves more efficient than ATU at water removal from services.

## THE FACTS

- Tested on live Gas Rig.
- 25mm PE service 9m long with ECV.
- Head to head – WExTech Services Vs ATU.
- Known quantity of water introduced to service.
- WExTech Services removed 98% of water.
- ATU had 3 attempts to remove water. WExTech Services was then used to verify that there was still water present and was used to remove the remaining 11% water from the service.



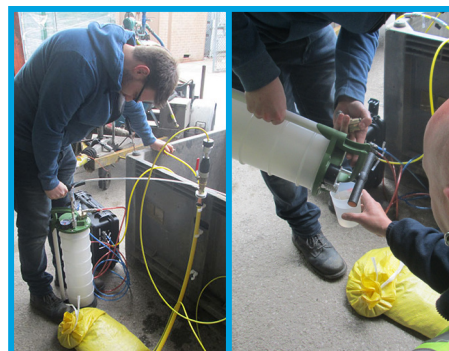
## THE SYSTEM

- 20-32mm PE and Serviflex service 9m long with ECV.
- 20m push
- One system to Locate, remove and verify removal of water from Services
- Compact design including rechargeable battery, hand held display and integrated water removal system and camera.



## THE BENEFITS

- Access to the service via ECV under live gas conditions.
- One man operation.
- Same operational time as the ATU, benefit of this system is that the 1st time call, 1st time fixed
- Saves time and expense of second team call out.
- Reduces time, inconvenience and noise pollution.
- Using this closed loop system returns gas to the serve and therefore has the environmental and safety benefits of not venting gas to atmosphere.
- Simple to use and simple to train.



+44 (0) 1423 816 060

INNOVATIVE ENGINEERING

WWW.SYNTHOTECH.COM



SYNTHOTECH  
SYNTHOTECH

CONTACT ONE OF OUR TEAM TODAY TO DISCUSS THIS PRODUCT

01423 816060 | [info@synthotech.co.uk](mailto:info@synthotech.co.uk) | [www.synthotech.co.uk](http://www.synthotech.co.uk)

©2016 Synthotech Ltd. All rights reserved to make changes to design and specification without prior notice or consent. E&OE