



SERVICECAM PE+M

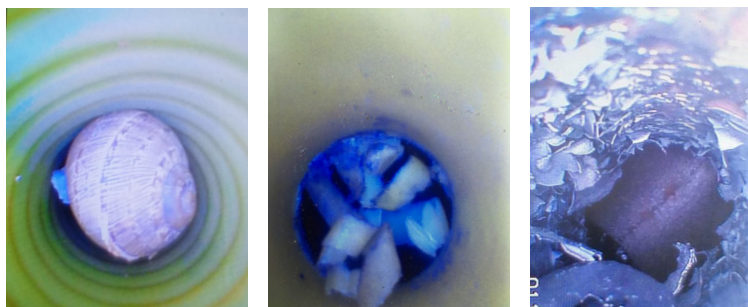
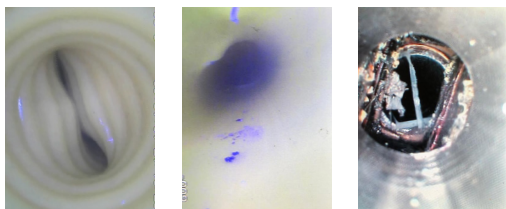
A live gas CCTV system for surveying PE, ServiFlex® and Metallic Services

- Can easily find the reason for poor pressure problems such as obstructions, water ingress or incorrect installation of services.
- For use on low pressure (75mbarg) 17.5mm - 32mm PE and ServiFlex® and metallic ¾" to 2" services.
- Entry system through ECV allows for 'live' inspection of up to 20m of pipe.
- Features a new tighter spring which reduces the chances of snagging on uneven surfaces.
- Synthotech's unique specially designed ServiGuides that will help the system navigate around up to two bends in metallic service pipes.

ServiGuides



Issues found by ServiceCAM:



- Obtain instant in-pipe information
- No interruption to customers
- Improve customer satisfaction
- Reduction in environmental impact
- One person operation

- High quality 9.5mm camera, featuring the latest LED lighting technology for improved vision.
- Camera is spring mounted to allow negotiation around up to 2 short radius PE and metallic bends (with the ServiGuides).
- System includes handheld display unit, rechargeable from mains or 12v in-car.
- Battery designed to last 5 hours continued use from full charge.



New tighter spring

For more information please click here - <https://youtu.be/xFWKEWdz44A>

CONTACT OUR TEAM TODAY TO DISCUSS YOUR REQUIREMENTS
01423 816060 > info@synthotech.co.uk > www.synthotech.com

©2020 Synthotech Ltd. All rights reserved to make changes to design and specification without prior notice or consent. E&OE

INFO@SYNTHOTECH.CO.UK

+44 (0) 1423 816 060

INNOVATIVE ENGINEERING

WWW.SYNTHOTECH.COM



SYNTHOTECH