



# SERVICECAM RANGE

A range of live gas CCTV system for surveying PE, ServiFlex® and Metallic Services

- Instant in-pipe information for surveying up to 20m.
- Fast diagnosis of poor pressure problems.
- Entry via ECV allows for live gas inspection.
- For use on 17.5mm-32mm or 3/4"-1" services up to 75MBARG.



## SERVICECAM LTE

- ServiCAM LTE provides the same reliable service that you have come to know and love from the ServiceCAM brand. It easily and efficiently locates causes of pressure issues.
- Can be used in PE services and up to the first bend in Metallic services.
- Battery powered designed to be used continuously for 5 hours from a full charge.
- The Synthotech Display Unit (SDU) can either be charged with a mains charger or a 12v in-car charger



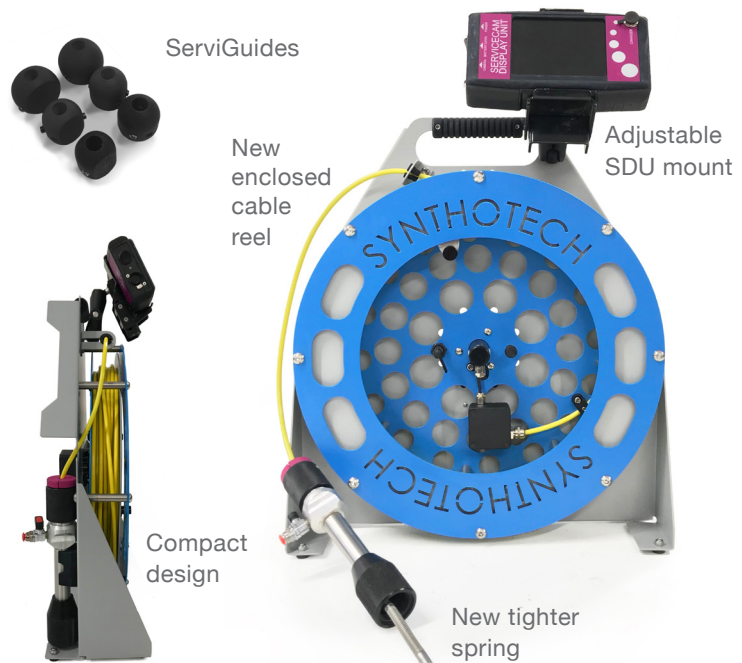
## SERVICECAM PE+M

- Contains the NEW ServiGuides. After a recent customer survey we found that customers wanted to be able to survey further in metallic service pipes. Therefore we have designed ServiGuides which will allow the user to navigate around up to 3 bends in metallic service pipes.
- This system also features a new tighter spring which, combined with the ServiGuides will push even further.



## SERVICECAM PRO

- Features a new tighter spring.
- Contains the new ServiGuides.
- Can navigate around up to 3 bends in metallic service pipes.
- The new enclosed reel with a lock and reel function on the frame makes deployment, use and tidying up simpler and quicker.
- The SDU now shows meterage to help to pinpoint the exact location of issues.
- New adjustable mount for the SDU makes it easier to see in tight spaces.
- A more compact design makes it easier to store and transport.



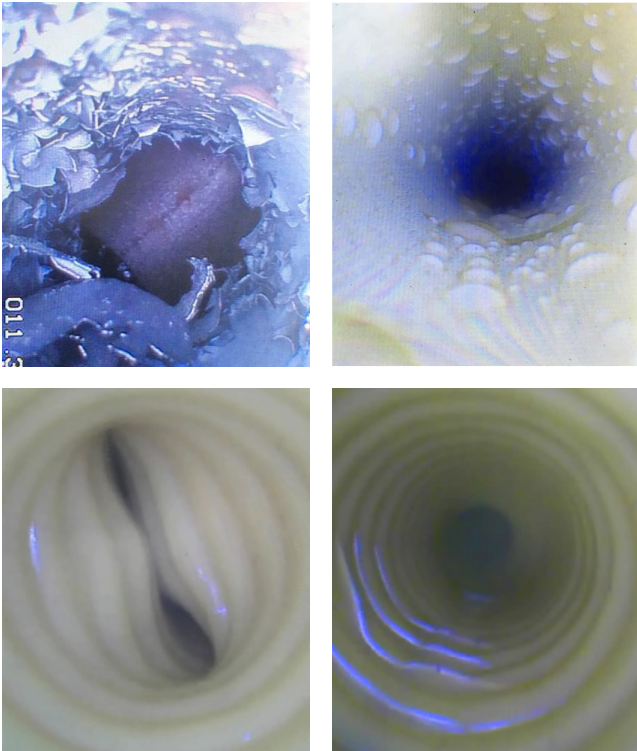


# SERVICECAM LTE

A live gas CCTV system for surveying PE, ServiFlex® Services

- Fast diagnosis of poor pressure problems due to obstructions, water ingress or incorrect installation of services.
- Can be used to survey 17.5mm - 32mm PE and ServiFlex® and metallic ¾" to 2" services (up to the first bend).
- Entry system through ECV allows for 'live' inspection of up to 20m of pipe.
- For use on low pressure (75mbarg).

Issues found by ServiceCAM:

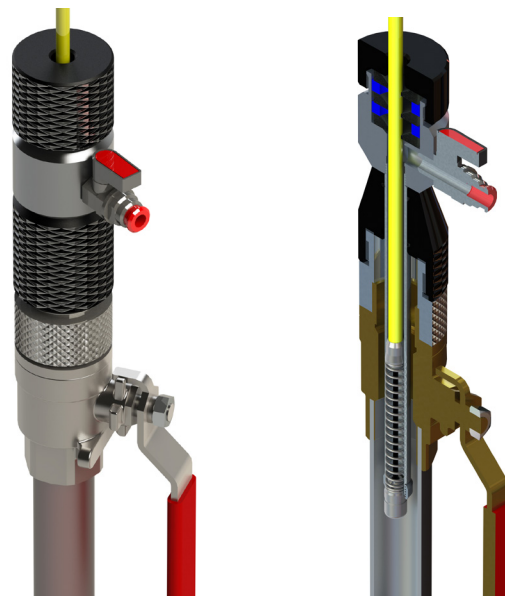


- High quality 9.5mm camera, featuring the latest LED lighting technology for improved vision.
- Camera is spring mounted to allow negotiation around up to 2 short radius PE and up to the first bend in a metallic.
- System includes handheld display unit, rechargeable from mains or 12v in-car.
- Battery designed to last 5 hours continued use from full charge.



- Obtain instant in-pipe information
- No interruption to customer supplies
- Improve customer satisfaction
- Reduction in environmental impact

ServiceCAM's unique glanding system enables users to survey inside live gas service pipes, using the ECV as an entry point.



**CONTACT OUR TEAM TODAY TO DISCUSS YOUR REQUIREMENTS**  
**01423 816060 > info@synthotech.co.uk > www.synthotech.com**

©2020 Synthotech Ltd. All rights reserved to make changes to design and specification without prior notice or consent. E&OE

INFO@SYNTHOTECH.CO.UK

+44 (0) 1423 816 060

INNOVATIVE ENGINEERING

WWW.SYNTHOTECH.COM



SYNTHOTECH



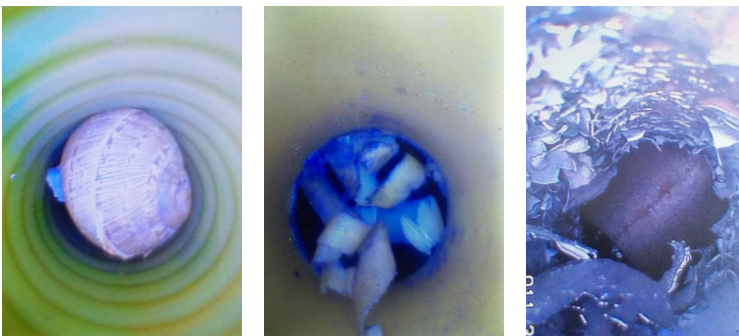
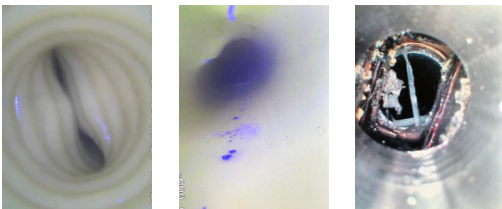
# SERVICECAM PE+M

A live gas CCTV system for surveying PE, ServiFlex® and Metallic Services

- Can easily find the reason for poor pressure problems such as obstructions, water ingress or incorrect installation of services.
- For use on low pressure (75mbarg) 17.5mm - 32mm PE and Serviflex® and metallic ¾" to 2" services.
- Entry system through ECV allows for 'live' inspection of up to 20m of pipe.
- Features a new tighter spring which reduces the chances of snagging on uneven surfaces.
- Synthotech's unique specially designed ServiGuides that will help the system navigate around up to two bends in metallic service pipes.



Issues found by ServiceCAM:



- Obtain instant in-pipe information
- No interruption to customer supplies
- Improve customer satisfaction
- Reduction in environmental impact
- One person operation

- High quality 9.5mm camera, featuring the latest LED lighting technology for improved vision.
- Camera is spring mounted to allow negotiation around up to 2 short radius PE and metallic bends (with the ServiGuides).
- System includes handheld display unit, rechargeable from mains or 12v in-car.
- Battery designed to last 5 hours continued use from full charge.



**CONTACT OUR TEAM TODAY TO DISCUSS YOUR REQUIREMENTS**  
**01423 816060 > info@synthotech.co.uk > www.synthotech.com**

©2020 Synthotech Ltd. All rights reserved to make changes to design and specification without prior notice or consent. E&OE

INFO@SYNTHOTECH.CO.UK

+44 (0) 1423 816 060

INNOVATIVE ENGINEERING

WWW.SYNTHOTECH.COM



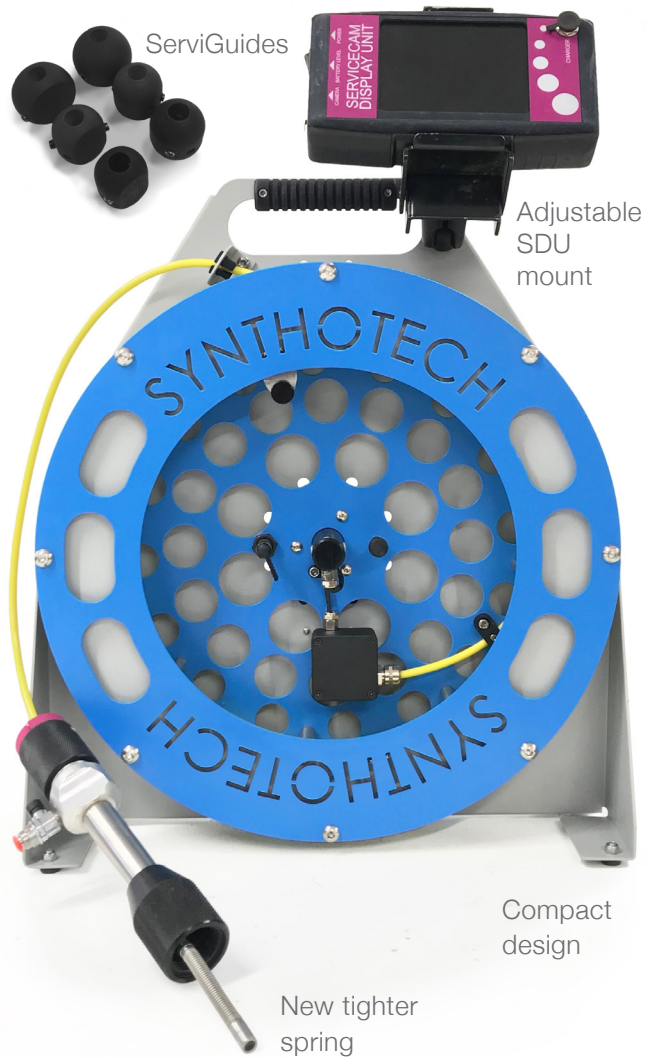
SYNTHOTECH



# SERVICECAM PRO

A live gas CCTV system for surveying PE, ServiFlex® and Metallic Services

- Fast diagnosis of poor pressure problems due to obstructions, water ingress or incorrect installation of services.
- For use on low pressure (75mbarg) 17.5mm - 32mm PE and Serviflex® and metallic ¾" to 2" services.
- Entry system through ECV allows for 'live' inspection of up to 20m of pipe.
- Features a new tighter spring and the recently developed ServiGuides that help the system navigate around two bends in metallic service pipes.
- New lock and reel function on the frame makes deployment, use and tidying up simpler and quicker.
- The SDU now shows meterage to help to pinpoint the exact location of issues.



New enclosed cable reel



- Obtain instant in-pipe information
- No interruption to customer supplies
- Improve customer satisfaction
- Reduction in environmental impact
- Compact design for easy storage
- On display accurate meterage

- High quality 9.5mm camera, featuring the latest LED lighting technology for improved vision.
- Camera is spring mounted to allow negotiation around up to 2 short radius PE and metallic bends (with the ServiGuides).
- System includes handheld display unit, rechargeable from mains or 12v in-car.
- Battery designed to last 5 hours continued use from full charge.

**CONTACT OUR TEAM TODAY TO DISCUSS YOUR REQUIREMENTS**  
01423 816060 > [info@synthotech.co.uk](mailto:info@synthotech.co.uk) > [www.synthotech.com](http://www.synthotech.com)

©2020 Synthotech Ltd. All rights reserved to make changes to design and specification without prior notice or consent. E&OE

INFO@SYNTHOTECH.CO.UK

+44 (0) 1423 816 060

INNOVATIVE ENGINEERING

WWW.SYNTHOTECH.COM



SYNTHOTECH