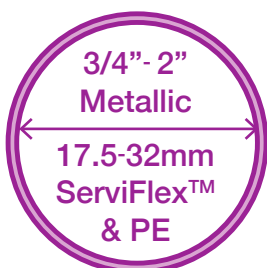




**SYNTHOTECH**  
specialist services

Specialist Services to carry out your camera inspection needs using the latest network approved Live Gas Camera Systems by Synthotech Technical Support Engineers.



- Approved for use on live gas services.
- Entry through Emergency Control Valve (ECV).
- For use on operating pressures up to 75mbar.
- 20m insertable length with 9.5mm LED camera.



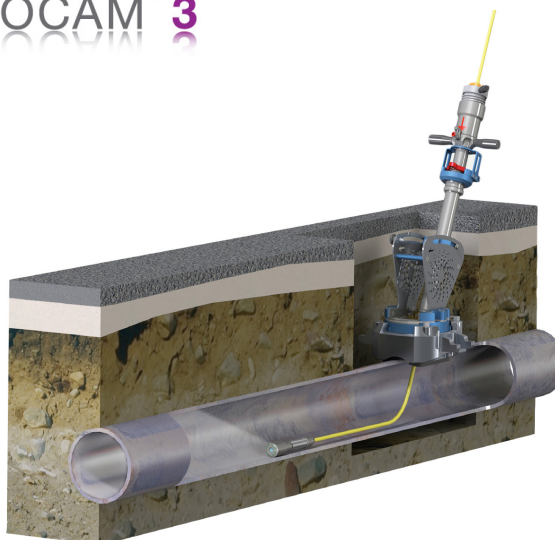
**SERVICECAM**<sup>™</sup>



- Potential push distance of 180m from single entry.
- Range of LED lit cameras to suit various pipe diameters.
- Entry via 1 1/4" – 2" drilling through a WASK base or 63mm High Flow Top Tee on operating pressures up to 2bar.



**SYNTHOCAM**<sup>™</sup> 3



+44 (0) 1423 816 060

INNOVATIVE ENGINEERING

WWW.SYNTHOTECH.COM

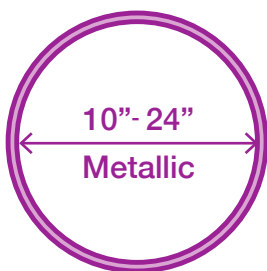


**CONTACTOURTEAMTODAYTODISCUSSYOURREQUIREMENTS**

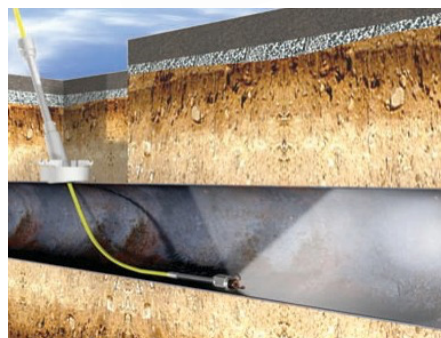
**SYNTHOTECH**  
specialist services

**01423 816060 > [info@sythotech.co.uk](mailto:info@sythotech.co.uk) > [www.synthotech.com](http://www.synthotech.com)**

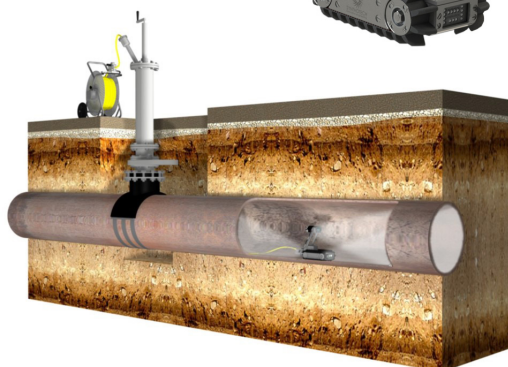
©2016 Synthotech Ltd. All rights reserved to make changes to design and specification without prior notice or consent. E&OE



- Pan and Tilt (PaT) camera allows full circumferential vision of the pipe.
- Entry through a 2½" drilling using an ALH System 1.
- Potential survey distance of 100m from a single excavation.
- Push rod system with 15mm diameter Cobra.
- Approved for Synthotech operatives on pressures up to 2bar.



- Height adjustable track driven robot.
- Horizontal end entry or Vertical launch through a 6" drilling with an ALH System 3.
- Potential survey distance of 200m from one excavation.
- Pan and Tilt height adjustable camera and rear facing camera.



- Investigate obstructions & pressure problems.
- Survey routes & plan mains replacement works.
- Locate joints, connections, syphons & water ingress.
- Avoid costs & delays associated with kit hire, training & maintenance.

+44 (0) 1423 816 060

INNOVATIVE ENGINEERING

WWW.SYNTHOTECH.COM



CONTACT OUR TEAM TODAY TO DISCUSS YOUR REQUIREMENTS

SYNTHOTECH

01423 816060 > [info@synthotech.co.uk](mailto:info@synthotech.co.uk) > [www.synthotech.com](http://www.synthotech.com)

©2016 Synthotech Ltd. All rights reserved to make changes to design and specification without prior notice or consent. E&OE