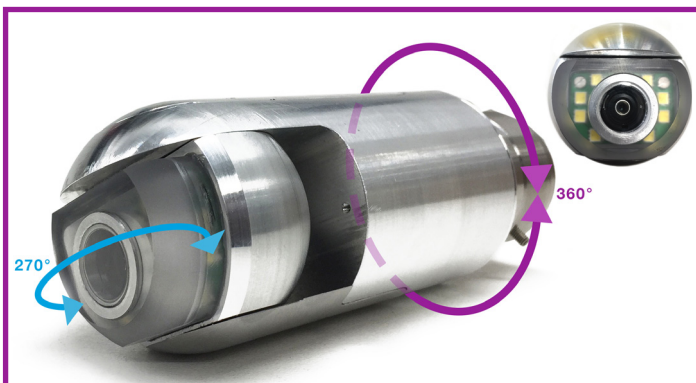
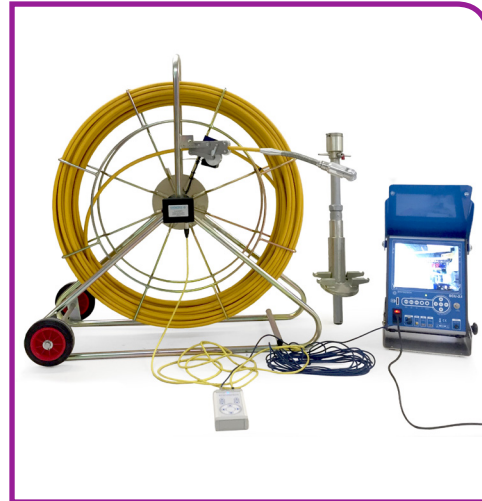


# SYNTHOCAM TITAN

Smallest live access pan and tilt camera for use in live gas mains.

### Titan

- Pan and Tilt camera head that pans 270° and tilts 360°.
- Can be used to survey live metallic gas mains between 8"-24".
- For use on medium pressure up to 2barg.
- Will push up to 50m in each direction from a single excavation depending on the size and condition of the pipe.
- Can be used with a 15mm or a 9mm cobra.
- Entry via a 2" BSP hole.



*'Titan, a powerhouse in providing vision for Tier 2 and Tier 3 pipework under live gas conditions.'*

- Second generation SynthoCam Pan and Tilt.
- No glass dome.
- Second generation super bright LEDs.
- Robust, strong design.
- Reduce maintenance costs.
- Clear clear crisp picture.



R110 Tier 2 and Tier 3 compatible



Used in repair and maintenance



Used in construction and replacement