



# SYNTHOCAM TITAN

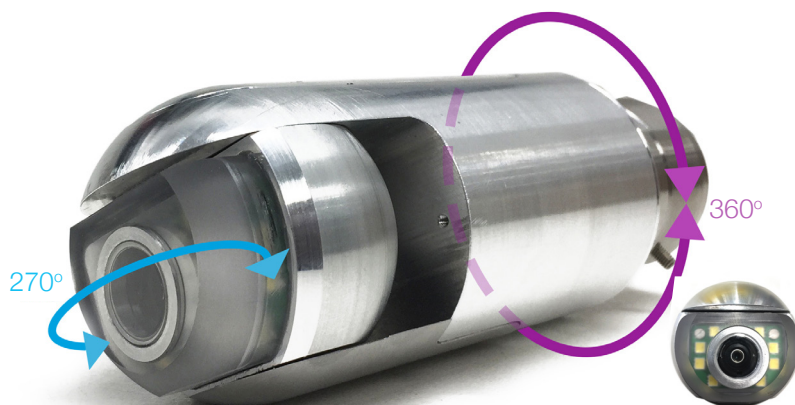
The smallest live access pan and tilt camera for use in live gas mains

- Pan and Tilt camera head that pans 270° and tilts 360°.
- Can be used to survey live gas metallic mains between 8"-24".
- For use on medium pressure up to 2barg.
- Survey up to 50m in each direction from the excavation depending on the size and condition of the pipe.
- Entry via a 2" BSP drilling so that it falls within a standard operation, reducing time and extra paperwork.
- Second generation SynthoCAM Pan and Tilt with a strong and robust design.



SynthoCam Titan has **no glass dome** and rotates in on its self to protect the lens during insertion. This minimises the risk of the kit getting damaged and therefore reduces maintenance costs. Full training is also provided helping to decrease the risk of kit damage due to human error.

- Second generation super bright LEDs creating a clear crisp picture.
- SynthoCare and full training included.



**CONTACT OUR TEAM TODAY TO DISCUSS YOUR REQUIREMENTS**  
**01423 816060 > [info@synthotech.co.uk](mailto:info@synthotech.co.uk) > [www.synthotech.com](http://www.synthotech.com)**

©2020 Synthotech Ltd. All rights reserved to make changes to design and specification without prior notice or consent. E&OE

INFO@SYNTHOTECH.CO.UK

+44 (0) 1423 816 060

INNOVATIVE ENGINEERING

WWW.SYNTHOTECH.COM



SYNTHOTECH